

Product Catalogue

*“We know your dreams.....,
Our products are designed to fulfil them”*



MGC Vision on Building Materials:

Our corporate vision is on Building Products sector where MGPL plays key roles in our Group....



No compromise in the quality concern, having our own mining is an advantage for us to use the best quality of Gypsum i.e., **95% pure and 100% natural** in the production of Gypsum products.



With our own transportation, we are avoiding Third party services and also demurrages costs to our valuable customers.



Our own vessels can deliver goods to any location our customer wants.



We give assurance for consistency of our transportation system as our Central Workshop is managed by Mercedes Benz team from German.

What is MGPL for...

After having close watch on the Building Construction Materials requirements in the Indian & African Markets, we started MGPL project with 60 Million Sqmt capacity in two phases, which is going to be 2nd biggest producer in Asian continent. We will complete it in two phases in the span of 3 years.



Why MGPL is best choice for the customers...

Indian market is very big and key role to generate good revenues, so we invested our assets to capture it. By seeing the market requirements and the Port location feasibility, We MGC, come up with huge investment in different sectors namely Gypsum Mining, Gypsum Products Manufacturing Plant, Transportation, General Construction and other divisions with base in Salalah.

With Indian market growth in the world economy and our Port Logistics capabilities, we know that we are at the right location to capture the Largest Market in Asian and Africa in respect to the Building Construction Materials Market share. By considering all the above factors we can easily enter into the Business markets of India, Kenya, Tanzania, Nigeria, Japan, Sri Lanka, Nepal and other countries. So, we started our MGPL.



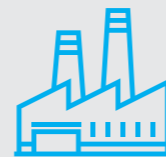
We are the best, as we have the best



15 years industrial experienced personal from Europe, GCC, Canada and India are part of our team.



We have the best laboratory with the state of the art laboratory equipments.



Plant equipments are from the best of the designers in the world.



Consultancy on Product Development are from Canada and Germany.



Europe based Quality In-charge is part of our Group.



Why we choose Oman as our Hub for business...

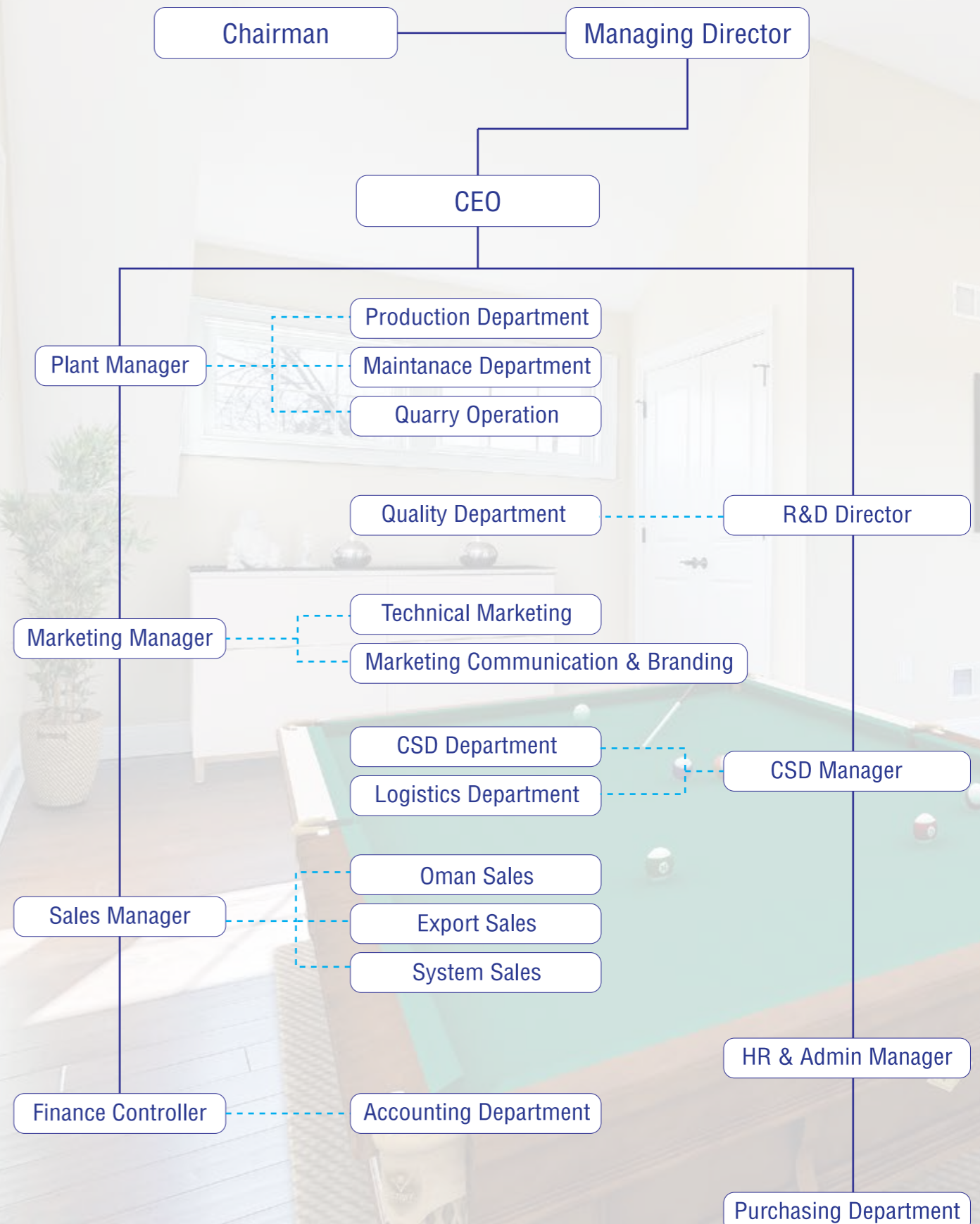
“Oman has the potential to become a minerals hub within a short span of time”. Oman is blessed with huge mineral deposits (both metallic and non- metallic). “Reports reveal Oman has about 950 Million Tonnes of Gypsum reserves”. Growing demand for Gypsum, mainly from Cement and Wallboard manufacturers, should see exports from Oman. It is nearly double the last year, making it the fourth largest Gypsum producing country, according to industry experts.

Port of Salalah, a major gateway for the export of minerals and other natural deposits. Gypsum exports from Salalah Port roars from year to year. The Gypsum demand growth is mainly from Asian countries like India, Japan, Indonesia, Vietnam and Bangladesh.

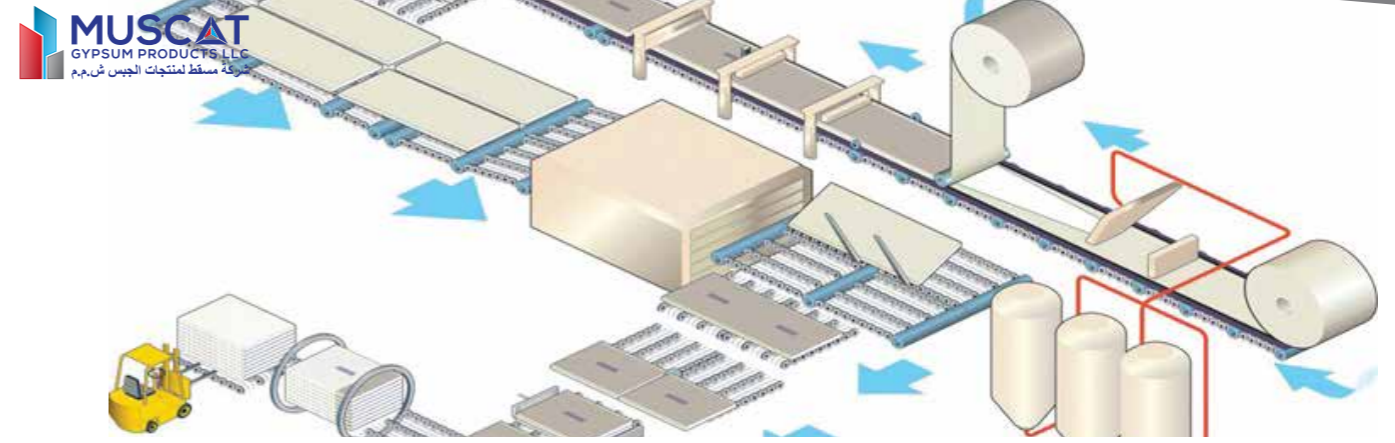
We are strong because of our motivational and driving forces:

Our visionary founders, who always motivates and supports us to take big decisions, if required, in implementing any new equipment/ infrastructure into our group. They always supports us in all our financial decision makings. Having 30 plus years of experience in the field of minerals and mining, he guides in every matter concern with the field of Mining. Explored all parts of the gulf and acquired immense knowledge in the mining and minerals.

Our driving force, is always there to guide us technically with his 25 plus years of vast experience in the field of Gypsum Building Products. Having enormous knowledge in the core filed along with the Marketing, Equipment knowledge and the Engineering knowledge, we are moving with unlimited energy.



Our Product Range



Equipments

After seeing, Gypsum Products Manufacturing Plants closely since 25 years, we know the effective and efficient equipment manufacturers in the world. So, we choose best equipments from best suppliers in the world (Germany, Canada, Turkey & India). Along with them, we have our own team of experts, who can designs and manufactures some equipments (30% of the total equipment of the plant) in the Gypsum Products Manufacturing Plant. All combined MGPL is using the State of the art technology.



Calcination for Board plant

Capacity: 300,000 Tons per year
Equipment: Germany.

Board Plant

Phase 1 Capacity: 30 million sqmt / year
Phase 2 Capacity: 30 million sqmt / year
Equipment: Canada / Germany / Turkey



Calcination Plasters

Type of calcination: Vertical Kettle
Capacity: 75,000 Tons per year
Equipment: Turkey / Thailand.

Plasters Dry Mixing Plant

Capacity: 60,000 tons /Year
Equipment: India
Types of Plasters: 8 type of gypsum plasters



“Quality is never an accident. It is always the result of intelligent effort.”

Quality Policy



We are driven by our ultimate goal of providing our customers with “total quality solutions”. With this in mind, we are committed to operate under the discipline and control of a Quality Management System. We aim to provide total quality management that translate to “100% Customer satisfaction”. We continuously seek to develop the skills and expertise of our people and instil in them the importance of quality service. We are committed to the preservation of natural resources and the compliance with all government regulations and statutory requirements. We are committed to deliver a safe and secure environment to all our employees, customers and customers goods at all times.

Laboratory



MGPL operates a full length Gypsum lab facilities. We test end-to-end lab process and analysis that duplicate full-scale manufacturing principles to provide fast information to operators at the production plant to produce good quality products.

We analyse Gypsum samples including Rock and other byproduct Gypsum. Using ASTM and EN test methods, we can test lab scale fire resistance, flexural strength, board core structure, impact resistance, humidified deflection and more for various R& D compositions or formulations. We benchmark lab samples, plant trial samples or commercial boards.



Guaranteed System Performance

Muscat Gypsum systems are tested at intentionally reputed 3rd party laboratories for Fire & Acoustics performance thus offering proven performance to the customer. MGC offers 10 years warranty for all its products and system performance



On Site Technical Support

For selected locations Muscat can provide onsite technical support to teach the applicators for correct application of dry wall partition to achieve system performance.



Technical Literature

Muscat Gypsum Systems are supported by several technical literatures (system book, system selector, installation manuals etc.) to help the project identify the right system as well as correct method of application. In addition, a wide range of typical drawings are made available to easily integrate Muscat Gypsum Systems within the overall project masterplan.



Wide Area of Application

Muscat Gypsum systems cover wide area of application including hotels, educational & commercial facilities, recreational centers among others thus offering something for all needs.



Customized Systems

In addition to standard applications, Muscat's strong specification engineering team can work with the designers and architects of specific projects to offer systems suiting specific needs of a particular projects.



Recycling Facility

Muscat Gypsum Company has its own recycling facility for Plasterboard, thus offering projects additional opportunity to gain LEED points.



Royal Gyp Regular Plasterboard



Field of Application

Royal Gyp Regular Plasterboards are used in Residential Buildings, Commercial Buildings, Hospitals, Airports, Educational Institutions and other such applications.

Product Description

Royal Gyp Regular Plasterboards are produced from high purity natural gypsum core being sheeted in a closely adhering best selected paper liners. Royal Gyp Regular Plasterboard has fiber glass which improves strength and Sag Resistance. It is lightweight for use in standard internal wall and ceiling applications.

Manufacturing Standards

Royal Gyp Regular Plasterboards are produced to ASTM C1396 / C1396M & EN 520 Type A standards.

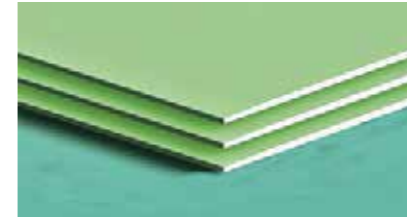
Product Characteristics	
Length	Standard length is 2400mm & 3000mm. Special length is 1800mm to 4500mm
Width	1200mm & 1220mm
Thickness	9.5mm, 12.5mm, 15mm & 16mm
Edge	Tapered, Square, Bevelled & Round
Colour	Face: Ivory , Back: Grey
Fire Rating	(Royal Gyp System application)
Acoustic Rating	(Royal Gyp System application)

Properties	Description
Length (mm)	Indian Standard 1830 On request any size between 1800- 4000
Width (mm)	Indian Standard 1220 ask our team for special width sizes
Thickness (mm)	standard 12.50 on request 7/8/9/9/5/12/15/18
Edge: Taped	The standard convenient type On request Squared/ Bevelled/ Round
Colour	Face: Ivory, Back: Grey

Properties (per 12.5mm)	ASTM 1396:2006 Specifications	DIN EN 520:2004 Specifications	Specifications
Flexural Strength (N) Longitudinal	≥ 480	≥550	≥560
Flexural Strength (N) Transverse	≥175	≥210	≥220
Nail Pull Resistance (N)	≥352	-	360
Core Hardness (N)	≥49	-	≥70
Edge Hardness (N)	≥49	-	≥60
Thickness (mm)	±0.40	-	±0.2
Board Length (mm)	±6.00,	-	0, -2.0 mm
Board Width (mm)	-3.0	-	0, -2.0 mm
End Squareness (mm)	±3.2	-	± 2.0
Weight (kg/m2)	-	-	8.0±0.2



Royal Gyp Moisture Resistant Plasterboard



Field of Application

Royal Gyp Moisture Resistant Plasterboard used in Residential Buildings, Commercial Buildings, Hospitals, Airports, Educational Institutions and other such applications.

Product Description

Royal Gyp moisture Plasterboard is lightweight for use in standard internal wall and ceiling applications where Moisture Resistant properties is required. They are produced from high purity natural gypsum core being sheeted in a closely adhering best selected paper liners. Royal Gyp moisture Plasterboard has fibre glass which improves strength and Sag Resistance.

Manufacturing Standards

Royal Gyp moisture Plasterboards are produced to ASTM C1396/C1396M & EN 520 Type A & H1 standards Tested accordance to ASTM E84 & ASTM 473

Product Characteristics	
Length	Standard length is 2400mm & 3000mm. Special length is 1800mm to 4500mm
Width	1200mm & 1220mm
Thickness	9.5mm, 12.5mm, 15mm & 16mm
Edge	Tapered, Square, Bevelled & Round
Colour	Face: Green, Back: Grey
Water Absorption	10%

Properties	Description
Length (mm)	Indian Standard 1830 On request any size between 1800- 4000
Width (mm)	Indian Standard 1220 ask our team for special width sizes
Thickness (mm)	standard 12.50 on request 7/8/9/9/5/12/15/18
Edge: Taped	The standard convenient type On request Squared/ Bevelled/ Round
Colour	Face: Green, Back: Grey

Properties (per 12.5mm)	ASTM 1396:2006 Specifications	DIN EN 520:2004 Specifications	Specifications
Type	X	F	
Flexural Strength (N) Longitudinal	≥ 480	≥550	≥570
Flexural Strength (N) Transverse	≥175	≥210	≥240
Nail Pull Resistance (N)	≥352	-	360
Core Hardness (N)	≥49	-	≥70
Edge Hardness (N)	≥49	-	≥60
Thickness (mm)	±0.40	±0.5	±0.2
Board Length (mm)	±6.0	0,-5	0, -2.0 mm
Board Width (mm)	0-3.0	0,-4	0, -2.0 mm
End Squareness (mm)	±3.2	≤ 2.5	± 2.0
Weight (kg/m2)	-	-	9.0±0.2
Water Absorption	≤5.0%	H-1, H-2, H-3	As per your request
Surface water Absorption	≤1.5%	-	9.0±0.2



Royal Gyp Fire Resistance Plasterboard



Product Characteristics	
Length	Standard length is 2400mm & 3000mm. Special length is 1800mm to 4500mm
Width	1200mm & 1220mm
Thickness	9.5mm, 12.5mm, 15mm & 16mm
Edge	Tapered, Square, Bevelled & Round
Colour	Face: Pink, Back: Grey
Fire rating	Royal system application (Tested ASTM E119)

Field of Application

Royal Gyp fire Resistant Plasterboard used in Residential Buildings, Commercial Buildings, Hospitals, Airports, Educational Institutions and other such applications.

Manufacturing Standards

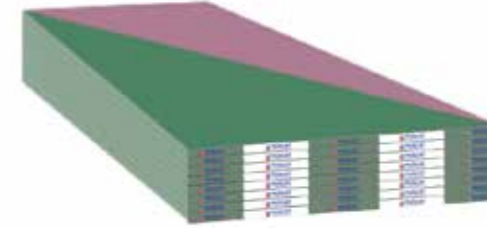
Royal Gyp Fire Resistance Plasterboards are produced to ASTM C1396 / C1396M Type X & EN 520 Type I, F standards. Tested accordance to ASTM E84 & ASTM 473

Product Description

Royal Gyp fire Plasterboard is lightweight for use in standard internal wall and ceiling applications where fire protection is required. They are produced from high purity natural gypsum core being sheeted in a closely adhering best selected paper liners. Royal Gyp fire Plasterboard has fiber glass which improves strength and Sag Resistance.

Properties (per 12.5mm)	ASTM C1396:2006 Specifications	DIN EN 520:2004 Specifications	Specifications
Type	X	F	
Flexural Strength (N) Longitudinal	≥ 480	≥550	≥650
Flexural Strength (N) Transverse	≥175	≥210	≥330
Nail Pull Resistance (N)	≥352	-	370
Core Hardness (N)	≥49	-	≥70
Edge Hardness (N)	≥49	-	≥70
Thickness (mm)	±0.40	±0.5	±0.2
Board Length (mm)	±6.0	0,-5	0, -2.0 mm
Board Width (mm)	0,-3.0	0,-4	0, -2.0 mm
End Squareness (mm)	±3.2	≤ 2.5	± 2.0
Weight (kg/m2)	-	-	9.0±0.2

Royal Gyp Fire & Moisture Resistance Plasterboard



Product Characteristics	
Length	Standard length is 2400mm & 3000mm. Special length is 1800mm to 4500mm
Width	1200mm & 1220mm
Thickness	9.5mm, 12.5mm, 15mm & 16mm
Edge	Tapered, Square, Bevelled & Round
Colour	Face: Green, Back: Pink
Water Absorbition	10 %
Fire rating	Royal system application

Field of Application

Royal Gyp fire & moisture Resistant Plasterboard used in Residential Buildings, Commercial Buildings, Hospitals, Airports, Educational Institutions and other such applications.

Manufacturing Standards

Royal Gyp fire & moisture Resistant Plasterboard are produced to ASTM C1396 / C1396M Type X & EN 520 Type I, F & H1 standards. Tested accordance to ASTM E84 & ASTM 473

Product Description

Royal Gyp fire & moisture Resistant Plasterboard is lightweight for use in standard internal wall and ceiling applications where fire & moisture resistance protection is required. They are produced from high purity natural gypsum core being sheeted in a closely adhering best selected paper liners.

Properties (per 12.5mm)	ASTM C1396:2006 Specifications	DIN EN 520:2004 Specifications	Specifications
Type	X	F	
Flexural Strength (N) Longitudinal	≥ 480	≥550	≥570
Flexural Strength (N) Transverse	≥175	≥210	≥240
Nail Pull Resistance (N)	≥352	-	360
Core Hardness (N)	≥49	-	≥70
Edge Hardness (N)	≥49	-	≥60
Thickness (mm)	±0.40	±0.5	±0.2
Board Length (mm)	±6.0	0,-5	0, -2.0 mm
Board Width (mm)	0,-3.0	0,-4	0, -2.0 mm
End Squareness (mm)	±3.2	≤ 2.5	± 2.0
Weight (kg/m2)	-	-	9.0±0.2
Water Absorption	≤ 5.0%	H-1, H-2, H-3	As per your request
Surface Water Absorption	≤ 1.5%	-	9.0±0.2



Royal Gyp Impact Plasterboard



Product Characteristics	
Length	Standard length is 2400mm & 3000mm. Special length is 1800mm to 4500mm
Width	1200mm & 1220mm
Thickness	9.5mm, 12.5mm, 15mm & 16mm
Edge	Tapered, Square, Bevelled & Round
Colour	Face: Yellow, Back: Grey

Field of Application

Royal Gyp Impact Plasterboard used in corridors, Busy areas, Residential Buildings, Commercial Buildings, Hospitals, Airports, Educational Institutions and other such applications.

Manufacturing Standards

Royal Gyp Fire Resistance Plasterboards are produced to ASTM C1396 / C1396M Type X & EN 520 Type I, F standards. Tested accordance to ASTM E84 & ASTM 473

Product Description

Royal Gyp Impact Plasterboard consists of a high density reinforced gypsum core with glass fibers and special additives encased in a very heavy natural finish strong paper liners. It can be used where high impact resistance, non-combustibility and fire resistance is needed. Royal Gyp Impact Plasterboard is produced from high purity natural gypsum core being sheeted in a closely adhering best selected paper liners.

Properties (per 12.5mm)	ASTM 1396:2006 Specifications	DIN EN 520:2004 Specifications	Specifications
Type	X	F	
Flexural Strength (N) Longitudinal	≥ 480	≥550	≥650
Flexural Strength (N) Transverse	≥175	≥210	≥330
Nail Pull Resistance (N)	≥352	-	370
Core Hardness (N)	≥49	-	≥70
Edge Hardness (N)	≥49	-	≥70
Thickness (mm)	±0.40	±0.5	±0.2
Board Length (mm)	±6.00	0, -5	0, -2.0 mm
Board Width (mm)	0, -3.0	0, -4	0, -2.0 mm
End Squareness (mm)	±3.2	≤2.5	± 2.0
Weight (kg/m ²)	-	-	9.0±0.2



Royal Gyp Glass MAT Plasterboard



Product Characteristics	
Length	Standard length is 1830mm. Special length is 1800mm to 4000mm
Width	1200mm & 1220mm. Ask our team for special width sizes
Thickness	13mm, 15mm & 16mm
Edge	Tapered, Square, Bevelled & Round
Colour	Face: Blue, Back: Blue

Field of Application

Royal Gyp Glass MAT Plasterboard used in both exterior and interior use. Delivers fire, moisture, water and mole resistance in one board, due to the special additives in the gypsum core, that is sandwiched between the glass mat liner on both sides.

Manufacturing Standards

Royal Gyp Glass Mat Plasterboards are produced to ASTM C1177/ C 1177M Type X & EN 15283 Part1

Product Description

Royal Gyp Glass Mat Plasterboard is suitable for hybrid construction in multi- storey buildings. Royal Gyp Glass MAT Plasterboard used in both exterior and interior use.

Properties (per 12.5mm)	ASTM C1177/ C1177 M Specifications	Specifications
Flexural Strength (N) Longitudinal As per ASTM C473	≥ 480	≥650
Flexural Strength (N) Transverse As per ASTM C473	≥175	≥350
Nail Pull Resistance (N)	≥352	355
Core Hardness (N)	≥49	≥80
Core and Hardness (N)	≥49	≥80
Edge Hardness (N)	≥49	≥80
Thickness (mm)	±0.40	±0.3
Board Length (mm)	±6.0	0, -2 mm
Board Width (mm)	0, -3.0	0, -3 mm
End Squareness (mm)	±3.2	±2.0
Weight (kg/m ²)	10.00	> 10
Water Absorption	≤5.0%	Max 10%

Agricultural Gypsum



While farmers have used gypsum (calcium sulphate dehydrate) for centuries, it has received renewed attention in recent years. This resurgence is due in large part to ongoing research and practical insights from leading experts that highlight the many benefits of gypsum.

More than 200 attendees heard from industry representatives, scientists, consultants and growers on the use of gypsum to improve soil structure, reduce nutrient runoff and more.

Major Benefits of Gypsums

Here are five key (and overlapping) benefits of gypsum highlighted:

1. Source of calcium and sulphur for plant nutrition.
"Gypsum is an excellent source of sulphur for plant nutrition and improving crop yield."
2. Improves acid soils and treats aluminium toxicity.
"Surface-applied gypsum leaches down to the subsoil and results in increased root growth,"
3. Improves soil structure.
"Gypsum has been used for many years to improve aggregation and inhibit or overcome dispersion in sodicsoils."
4. Improves water infiltration.
"When we apply gypsum to soil it allows water to move into the soil and allow the crop to grow well," he said.
5. Helps reduce runoff and erosion.
"Gypsum should be considered as a Best Management Practice for reducing soluble P losses,"

Natural Gypsum



The mineral Gypsum precipitated some 100 to 200 million years ago when sea water evaporated. From a chemical point of view it is Calcium Sulphate Dihydrate (CaSO4.2H2O) deposited in sedimentary layers on the sea bed. Under high pressure and temperature Gypsum turns into Anhydrite (CaSO4).

In nature, Gypsum and Anhydrite occur as beds or nodular masses up to a few meters thick. Gypsum is formed by the hydration of Anhydrite. The depth of hydration can range from the surface of the deposit down to three hundred meters, depending on temperature and pressure, topography and the structure of the deposit. Anhydrite is often mined in conjunction with Gypsum, but is comparatively limited in its technical applications. The content of Gypsum in sedimentary rock varies from 75% to 95%, the rest being clay and chalk. Gypsum rock contains about 21% of chemically combined water.

Gypsum usage is Gypsum Wall board manufacturing, Plasters, Value added plasters, Ceiling tiles, Cement industry,

**We supply gypsum rock in below sizes,
10-50 mm / 50-100 mm / 100 -150 mm**

Gypsum Components	Percentage(%)	Gypsum Components	Percentage(%)
CaSO4.2H2O	94.00	MgO	0.08
Combined water	19.22	NaCl	0.01
SiO2	0.34	So3	42.70
Al2O3	0.048	Moisture Content	0.35
Fe2O3	0.065	Size (0-50mm)	100
CaO	30.67		



What is Gypsum Plaster?

Gypsum plaster is among the most commonly used material in the construction and home-remodelling niche. Gypsum is sourced from mineral rocks that contain rich deposits of calcium sulphate. Gypsum plaster is also called plaster of Paris. It is prepared from finely-grounded gypsum, which is heated to extremely high temperatures and then mixed with water. The resulting material, called gypsum plaster, is superior to cement and mortar in many ways.

When dry POP powder is mixed with water it hardens. This material which can be applied over brick, block or concrete surface to form a smooth surface is called gypsum plaster.

Before....

Earlier, a 6 mm coat of gypsum plaster (termed as POP punning) is usually applied on the top of cement plaster to give a smooth finish to it before painting. This is a two stage process and involves various elements like sand, cement and water which has to be mixed onsite.

Recent developments.....

This process is slowly being replaced by a direct application of single coat of gypsum plaster. In gypsum plaster, readymade POP powder is mixed with water and applied directly on the wall. Gypsum Plaster can be applied directly on any brick, solid or hollow blocks, AAC blocks and plaster boards. Gypsum plaster has good insulation properties, fire resistant and impact resistant. Also, gypsum saves a lot of time during construction and has superior finish. These properties have clearly drawn attention of real estate builders and contractors towards choosing gypsum plaster over traditional cement plaster.



Technical comparative chart of Royal Plaster vs Sand Cement Plaster

SL.NO	GYPSUM PLASTER	CEMENT-SAND PLASTER
01	Royal Plaster is a ready Plaster where only water has to be mixed	Sand & Cement Plaster needs to be mixed in ratios controlled by labour without any standardized means
02	It is a single application plaster with smooth finish	Cement, sand Curing and Putty are required to finish the surface
03	Royal Plaster not required curing and no wastage of water	Sand Cement of Plaster needs curing for 10-12 days at least 2 times of day
04	After drying for about 3-4 days, the surface can be directly painted	A coat of POP is required to smoothen the wall & make it ready to paint
05	No cracks will occur after application of Royal Plaster	Hairline cracks are always found in a sand cement plaster
06	Excellent bonding and compatible with all type of paints	Needs putty or POP before painting
07	Royal Plaster is of the highest quality and lab tested	Sand quality can't be determined
08	The space looks large and beautiful as it is pure white in colour	The space looks like smaller and unappealing as it is dark grey in colour
09	Can be applied on all wall/surfaces	Cannot be applied on smooth surfaces
10	Excellent for repair works	Looks patchy in repair works and air line cracks appear
11	Low density – light weight and total strength on drying	High density and needs water to attain strength
12	Easy workability and economical for an excellent finish	Difficult to work in case of excellent finish and also becomes expensive
13	Decreases the building weight as it can be applied in 3mm to 30mm thick ness	Increases building weight as a thickness is 12mm
14	No Spoilage : It is packed in 25 kg bag and is opened at work spot	High spoilage : Sand has to be cleaned, washed and lifted in open containers, hence spoilage cannot be accounted
15	High Shelf life- one year	(Cement) low shelf life – 3 months

Comparison Between Gypsum Plaster And Traditional Cement Plaster

SI No.	PARAMETERS	GYPSUM PLASTER	SAND & CEMENTPLASTER
1	Availability	Ready to use Bags	Scarcity of Sand & water availability
2	Finish	Crack free and smooth finish	Rough surfaces
3	Time Required for paint ready surface	72 hours in normal weather condition	At least seven days curing and then three days drying required
4	Water saving	Does not require water curing	At least seven days curing
5	Shrinkage, Crack	No Shrinkage and cracks	Shrinkage ,cracks are common
6	Density (kg/m3)	650 to 700	1400 to 1500
7	Coverage m2/ton for 13mm thick	65 - 70	30 - 33
8	Compressive strength N/mm2	7	12
9	Quality Assurance	As per IS 2547-1976 Part I &II	No
10	Labour	Labour saving Process	Labour intensive process
11	Green Credentials	LEED points available	Not Applicable



Made for any surface, anywhere, anytime...

After seeing, Gypsum Products Manufacturing Plants closely since 25 years, we know the effective and efficient equipment manufacturers in the world. So, we choose best equipments from best suppliers in the world (Germany, Canada, Turkey & India). Along with them, we have our own team of experts, who can designs and manufactures some equipments (30% of the total equipment of the plant) in the Gypsum Products Manufacturing Plant. All combined MGPL is using the State of the art technology.

Royal Gyp Plasters are made from the purest natural Gypsum, and offer a sophisticated and comprehensive range,

- Comprising one-coat,
- Hand-applied,
- Machine-applied and finishing plasters.

- The most important aspect of all plasters from the Royal Plasters are stable, is the fact that they don't require any curing whatsoever.
- Royal Plasters are environmental friendly.
- Royal Plasters are impact resistant which comes with a degree of hardness equivalent to a thick wall of heavy masonry construction.
- Royal Plasters are good solution for repairs and cracks on the walls.
- Royal Plasters acts as a thermal insulator when combined with insulation materials.
- Royal Plasters equilibrates humidity and heat peaks. It stores humidity when room is humid and automatically releases humidity when the indoor air becomes dry.
- Tough Plasters regulates sounds, fire protective and non-combustible.

95% Pure Natural Gypsum is the secret to our Strength....



Gyp Plaster One Coat

- Smooth
- Easy to apply and with a high quality finish that is ready for any paint.
- With no curing required.
- It's also energy saving.
- Thermally insulating.
- Economical.
- Fire resistant.

Technical Specifications

Water/Plaster Ratio	65%
Initial Setting Time	15 minutes
Application	> 12 kg/ sq.m
Density	750kg/Cubic Metre
Packaging	25 Kg PP Bags





Gyp Prime Plaster One Coat

This gives extra coverage, and an exciting white finish. It is economical in usage, is fire-resistant and as with all our plasters there is no curing required.

Technical Specifications

Water/Plaster Ratio	60-65%
Initial Setting Time	15 to 20 minutes
Coverage	12 kg / sq.m for one cm thickness
Density	650-700kg/Cubic Metre
Packaging	25 Kg PP Bags

Gyp Supreme Plaster One Coat

More coverage and superb white finish. It is economical in usage, easy to apply, is fire-resistant, doesn't require curing and is energy saving too. Not to mention being thermally insulating.

Technical Specifications

Water/Plaster Ratio	60-65%
Initial Setting Time	15 to 20 minutes
Coverage	9.5 – 10 kg/sq.m for 1 cm thickness
Density	650-700kg/Cubic Metre
Packaging	25 Kg PP Bags



Gyp Spray Plaster

Gyp spray Plaster has a drying time of 2-3 hours and provides durable smooth white surface ready for direct application of decorations.

Gyp Spray machine plaster-application is designed to be applied by machine up to 20mm thickness.

It is suitable for direct application onto block work, uneven in-site concrete and thin joint block work.

It offers excellent productivity and is up to 3 times faster than traditional plastering methods

Technical Specifications

Water/Plaster Ratio	50-55%
Initial Setting Time	180 minutes
Density	700kg/m3
Packaging	25 Kg PP Bags



JOINTING COMPOUND



Product Description:

MGPL Multi use Jointing Compound is a ready mix calcium carbonate based joint filler with vinyl binders and high value additives which provides superior performance compared to ordinary ready mixed products.

Advantages

- Easy Handling, Crack Resistance and superior adhesion that ensures tight bonding.
- Joint finishing is fast, easy, and smooth, reducing work efforts and improving appearance and quality of the job.
- Easy filling, Fast drying, Easy to sand
- Creamy and smooth consistency
- Ready to be used directly from the bucket



Applications

Joints, Fasteners, trims and concealment of drywall partition & ceiling systems.

Standards

Our Jointing compound comply to ASTM C475 Standard Specification for Joint Compound for finishing gypsum board.

Why MGPL?

We provide 95% Pure and 100% Natural Gypsum

We understand that every customer is different and therefore has different requirements. We work hard to constantly and consistently deliver the best Gypsum products which become preferred choice of companies, builders, interior decorators etc.

CUSTOMER
FRIENDLY
SUPPORT
INNOVATIVE
POSITIVE
PRECISE
TIMELY

Muscat Gypsum products LLC takes pride in offering the highest standard of products according to the market requirements. We want to become your choicest supplier of products for partition, wall lining, ceiling, flooring, insulation and fire protection systems. We are known for quality, attention to detail and unrivaled industry knowledge.

We are fully apprised of Gypsum product development & our products meet your performance requirement. Our warehouse is always stocked with the complete product line which helps to create partitions, ceilings, wall linings and for interior designing requirements. All our products are specially selected for professional quality & reliability.

ROYAL
GYP//SHEET

ROYAL
PLASTERS

ROYAL Build-Tech
Products LLP

Royal Build-Tech Products LLP
SRN : M06091185
No. 5th Cross, Pon Nagar, Trichy,
Tamil Nadu 620 001.

MUSCAT
GYPSUM PRODUCTS LLC
شركة مسقط لمنتجات الجبس ش.م.م

Muscat Gypsum Products LLC
P.O.Box: 2117, Postal Code: 211,
Salalah - Sultanate of Oman
+968 23212194

ROYAL Gypsum
Products FZC

Royal Gypsum Products- F.Z.C,
Office-C1-620, P.O.Box No: 45253,
Azman Free Zone, Ajman, UAE